



Ellen Litz

November 2, 1921 - December 25, 2014

93 year old, Mrs. Ellen Litz of Oconee Illinois died Thursday, December, 25, at 9:15 AM at Heritage Health, Pana, Illinois.

Mrs Ellen Litz was born Wednesday, November 2 1921, in Audubon Township Montgomery County Illinois, the daughter of George and Anna (maiden name Krasuezkas) Patkus.

REARED: family farm Audubon Twp

ELEMENTARY: Merkel Country School

Married October 7, 1941, to Carl Emil Litz in St Charles Missouri

OCCUPATION: Farm Wife

Survived by:

DAUGHTER Betty Holthaus SPOUSE Michael G OF Pana IL

DAUGHTER LaVerne E Holthaus SPOUSE Patrick J OF Pana IL

SON Emil J Litz SPOUSE Kathy OF Decatur IL

SON Richard C Litz SPOUSE Tresa OF Pana IL

GRANDSON Eric Holthaus SPOUSE Janelle OF Pana IL

GRANDDAUGHTER Michelle Blackwell SPOUSE Troy OF Pana IL

GRANDSON Todd Holthaus OF Indianapolis Indiana

GRANDSON Troy Holthaus SPOUSE Karen OF Forsyth IL

GRANDSON Matt Holthaus SPOUSE Janelle OF Highland IL

GRANDDAUGHTER Gina Gofron SPOUSE Ron OF Dublin California

GRANDDAUGHTER Andi Gordon SPOUSE Scott OF Dublin California
GRANDDAUGHTER Vanessa Manuel SPOUSE Kirby OF Pana IL
GRANDSON R C Litz SPOUSE Tabitha OF Pana IL
GRANDDAUGHTER Meghen Montgomery SPOUSE Mark OF Shelbyville IL
GRANDDAUGHTER Twishia Nail SPOUSE Carl OF Litchfield IL

GREAT GRANDCHILDREN Twenty four: [Allison, Lucas, Sam, Alivia, Issabell,
Ava Marie], [Jared, Michael,

Emily], [Noah, Jayden], [Carter, Rex, Anna Rose], [Wilson, Megan,
Addison], [Jacoby, Shelby, Hayleigh,

Karsen],[Mallory, Morgan], and [Wyatt]

Preceded in death by: Parents, Husband Sept 7, 1994, Joseph, George, and
John Patkus, Sisters: Mary Metzger, Julia Casabon, Ann Walker, and Nellie
Carey

CONDOLENCES MAY BE MADE AT WWW.KENNEDYPANA.

Cemetery Details

Calvary Cemetery, Pana

2207 W Rt 16
Pana, IL 62557

Previous Events

Visitation

DEC **28**. 2:00 PM - 5:00 PM (CT)

Kennedy & Sons, Funeral Directors
401 S. Locust Street
Pana, IL 62557
(217) 562-3959
info@kennedypana.net
<https://www.kennedypana.net>

Service

DEC **29**. 10:00 AM (CT)

St. Patrick's Catholic Church
301 S Locust Street
Pana, IL

Tribute Wall



“ Kennedy & Sons Funeral Directors PC created a Tribute Video in memory of Ellen Litz



Kennedy & Sons Funeral Directors, P.C. - December 27, 2014 at 05:34 PM



I am speechless, never have I seen anything as beautiful as this video. A wonderful family !!!

Nancy Cravens - December 28, 2014 at 11:35 AM

KA

Just found out this evening, so sorry. Watching this video brought back so many happy memories! Found myself smiling through the tears. What a wonderful woman and such a rich part of my childhood!
- Karen Amling

Karen Amling - January 06, 2015 at 08:30 PM

GS

This Was A beautiful Video . Looks like she had a wonderful family and a great life .

Glenda Spinner - January 08, 2015 at 08:50 PM

PO

“ Penny Osborn lit a candle in memory of Ellen Litz



Penny Osborn - January 14, 2015 at 08:32 AM

PZ

“ Ellen was such a special lady and was so loved by so many. We were all lucky to have her for as long as we did and so healthy. She was so thoughtful and boy am I gonna miss getting my \$2 bill for my birthday. Will miss that beautiful smile. Love to all. Patty & Chuck Z.

Patty Zahradka - January 08, 2015 at 01:51 AM

FL

“ we are so sorry for your loss
Kenny and Rachael Flesch



Flesch - January 07, 2015 at 10:50 AM

LA

“ Lou Ellen & Jim Anderson lit a candle in memory of Ellen Litz



Lou Ellen & Jim Anderson - December 29, 2014 at 06:33 PM

KN

“ Karen (Witt) Nance lit a candle in memory of Ellen Litz



Karen (Witt) Nance - December 29, 2014 at 08:49 AM

RB

“ Roy & Becky Billiter lit a candle in memory of Ellen Litz



Roy & Becky Billiter - December 29, 2014 at 08:34 AM

AW

“ AJ & Sandie Wiss lit a candle in memory of Ellen Litz



AJ & Sandie Wiss - December 29, 2014 at 08:12 AM

DG

“ Danielle Jones & Bill Grandon lit a candle in memory of Ellen Litz



Danielle Jones & Bill Grandon - December 28, 2014 at 10:08 PM

DF

“ *Danielle Jones & Bill Grandon*

Dan & Candy Jones & Family - December 28, 2014 at 10:04 PM

DF

“ *Dan & Candy Jones & Family lit a candle in memory of Ellen Litz*



Dan & Candy Jones & Family - December 28, 2014 at 10:01 PM



“ *Diane Rinderknecht Presnell lit a candle in memory of Ellen Litz*



Diane Rinderknecht Presnell - December 28, 2014 at 07:32 PM

LC

“ *Larry & Candy Craig lit a candle in memory of Ellen Litz*



Larry & Candy Craig - December 28, 2014 at 06:10 PM

DD

“ David And Janet Dorn lit a candle in memory of Ellen Litz



David and Janet Dorn - December 28, 2014 at 02:18 PM

SJ

“ Shirley Jones lit a candle in memory of Ellen Litz



Shirley Jones - December 28, 2014 at 12:26 PM

RS

“ Ron And Jodi Smith lit a candle in memory of Ellen Litz



Ron and Jodi Smith - December 28, 2014 at 09:57 AM

SF

“ Scott And Connie Fribley lit a candle in memory of Ellen Litz



Scott and Connie Fribley - December 28, 2014 at 09:50 AM

JV

“ *Jr. & Betty Vits lit a candle in memory of Ellen Litz*



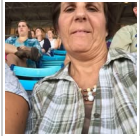
Jr. & Betty Vits - December 28, 2014 at 09:48 AM

JJ

“ *Jim And Pat Jensen lit a candle in memory of Ellen Litz*



Jim and Pat Jensen - December 28, 2014 at 09:07 AM



“ *Gina Shuff lit a candle in memory of Ellen Litz*



Gina Shuff - December 28, 2014 at 08:58 AM

RA

“ *Our thoughts and prayers are with u all. She was a wonderful woman.
Rachael and Kenny Flesch*



rachael - December 28, 2014 at 07:53 AM

CS

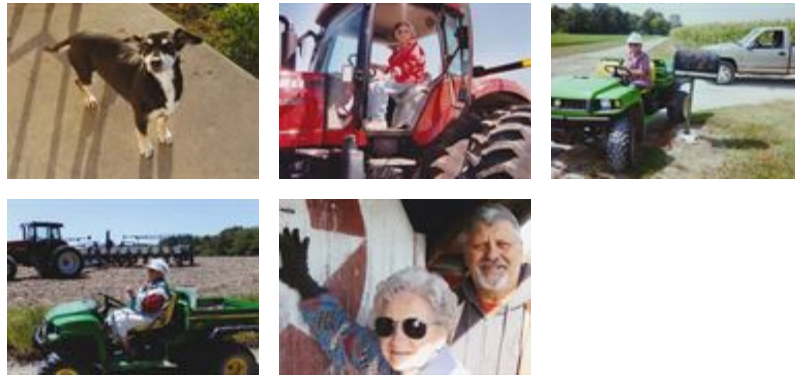
“ Carol Schramm lit a candle in memory of Ellen Litz



Carol Schramm - December 27, 2014 at 07:49 PM



“ 28 files added to the album Life Tributes



Kennedy & Sons Funeral Directors, P.C. - December 27, 2014 at 05:12 PM

MH

“ Marsha Hrabak lit a candle in memory of Ellen Litz



Marsha Hrabak - December 27, 2014 at 04:46 PM

OC

“ Thinking of each of you during this time! She sure will be missed by the community of Oconee!

Oconee Grain Co & Fertilizer

Oconee Grain Co - December 27, 2014 at 03:14 PM

CW

“ Thinking of each of you during this difficult time! Cinde Ward & Jr Carroll

Cinde Ward - December 27, 2014 at 03:13 PM

PD

“ I remember telling Ellen I am Weber's daughter & Ellen always saying " you are from Oconee, Good people".

We are Blessed to know you.

Petey Durbin - December 27, 2014 at 12:13 PM

OM

“ Owen & Helen Miles lit a candle in memory of Ellen Litz



Owen & Helen Miles - December 27, 2014 at 10:28 AM

RM

“ Roberta Merrifield lit a candle in memory of Ellen Litz



Roberta Merrifield - December 27, 2014 at 10:04 AM

RD

“ Rhoda Dudra lit a candle in memory of Ellen Litz



Rhoda Dudra - December 27, 2014 at 09:53 AM

KV

“ Kathy And Rick Vits lit a candle in memory of Ellen Litz



kathy and rick vits - December 27, 2014 at 09:27 AM

DB

“ A good neighbor-- always a wave when the brown and cream Chevy went by
I remember Betty and Laverne coming over to babysit the BEYERS kids
Rick and Emil on bikes then the honda and later the cars and today the tractors or combine
Our condolences and prayers to the family



Denny and Jodi Beyers - December 27, 2014 at 08:26 AM

AL

“ Rick and Amanda Lehn
Our thoughts and prayers are with you all at this very difficult time.



amanda Lehn - December 27, 2014 at 07:11 AM

AH

“ *Adrian Hebert lit a candle in memory of Ellen Litz*



Adrian Hebert - December 26, 2014 at 06:52 PM

SS

“ *I remember the contests my mom and aunt Ellen had on who could bake the tallest chiffon cakes for our birthdays. The results sure were good, as both made great cakes and these were from scratch. She was a great lady.*



To the family Mom and I share your loss as Mom and her were great friends as well as sister-in-law.

Ethel Wagner and Shirley Sullivan

shirley sullivan - December 26, 2014 at 03:59 PM

VO

“ *Vickie Trexler O'Block lit a candle in memory of Ellen Litz*



Vickie Trexler O'Block - December 26, 2014 at 03:51 PM

RD

“ *Richard And Eileen Dudra lit a candle in memory of Ellen Litz*



Richard and Eileen Dudra - December 26, 2014 at 03:40 PM



“ *Divine Peace Bouquet was purchased for the family of Ellen Litz.*



December 26, 2014 at 01:41 PM

JJ

“ *Heritage Health Staff*



Judyb Jones - December 26, 2014 at 11:25 AM

WH

“ *Sorry for your loss.
Bill and Evelyn*



William Holthaus - December 25, 2014 at 10:06 PM



“ *Let It Snow* was purchased for the family of Ellen Litz.



December 25, 2014 at 08:39 PM



“ *When I was a child, Grandma never let me outside when Grandpa was running equipment. She said I'd be "flatter than a pancake".*

Eric - December 25, 2014 at 08:23 PM



“ *Medium Dish Garden* was purchased for the family of Ellen Litz.



December 25, 2014 at 08:12 PM



“ *Andy Lebon lit a candle in memory of Ellen Litz*



Andy Lebon - December 25, 2014 at 07:49 PM

JA

“ Jay Askew lit a candle in memory of Ellen Litz



Jay Askew - December 25, 2014 at 07:48 PM

LL

“ Linda Lebon & Kathryn Lehn lit a candle in memory of Ellen Litz



Linda Lebon & Kathryn Lehn - December 25, 2014 at 07:46 PM

RL

“ Roger E. Lebon sent a virtual gift in memory of Ellen Litz



Roger E. Lebon - December 25, 2014 at 03:01 PM

BR

“ Sorry for your loss. Craig, Becky, Dagen, & Hadley Reed



Becky reed - December 25, 2014 at 02:10 PM

SO

“ *Deepest Sympathy in your loss of a loved one. Prayers*
John & Star Oary



Star Oary - December 25, 2014 at 01:02 PM



“ *Tracy Kennedy lit a candle in memory of Ellen Litz*



Tracy Kennedy - December 25, 2014 at 12:20 PM